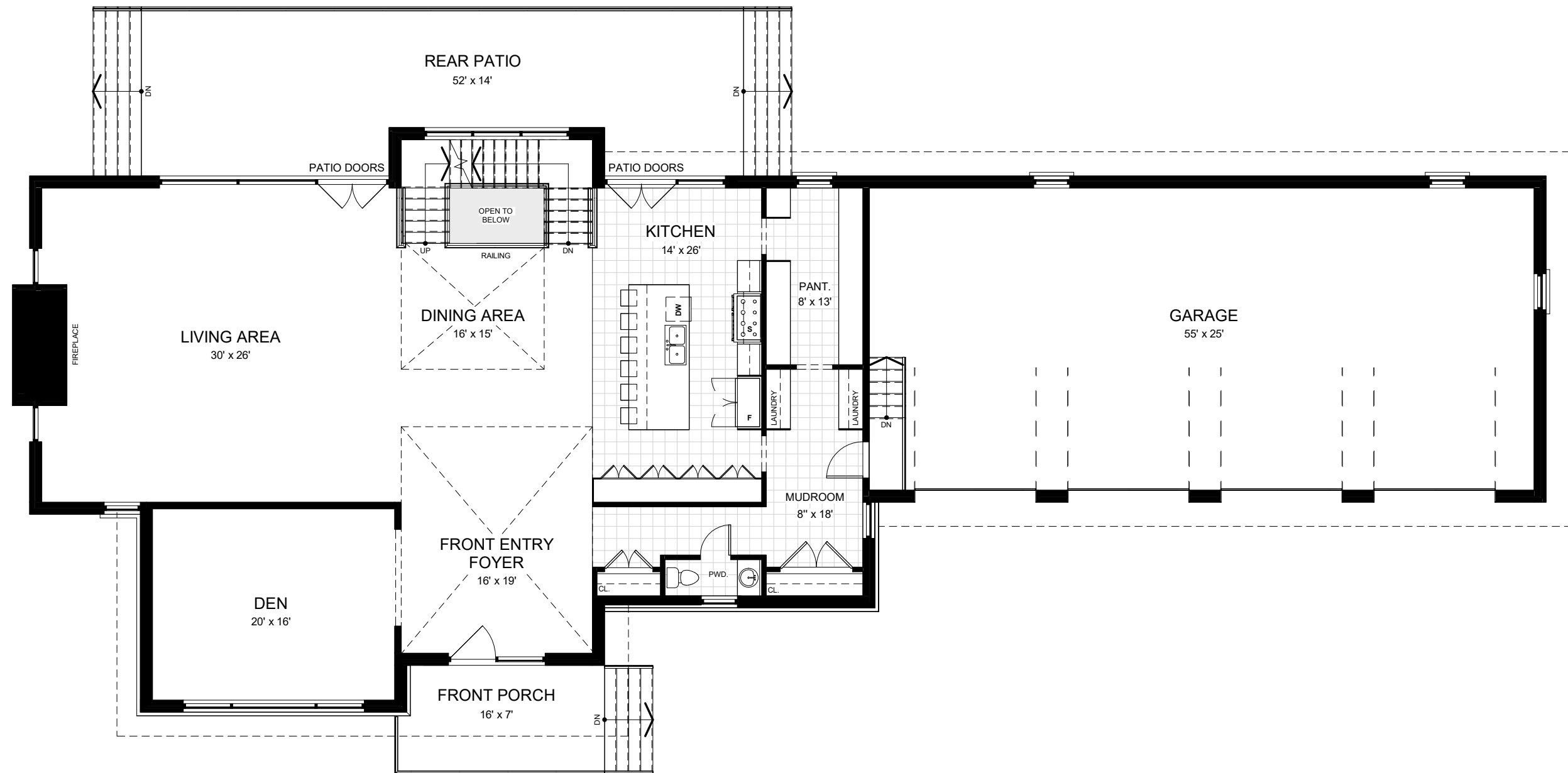


**BASEMENT FLOOR**

SCALE: 1" = 10'

TOTAL GFA: 5425 sq. ft.

PLANS PREPARED BY: **BARRY GOLDMAN ARCHITECT**

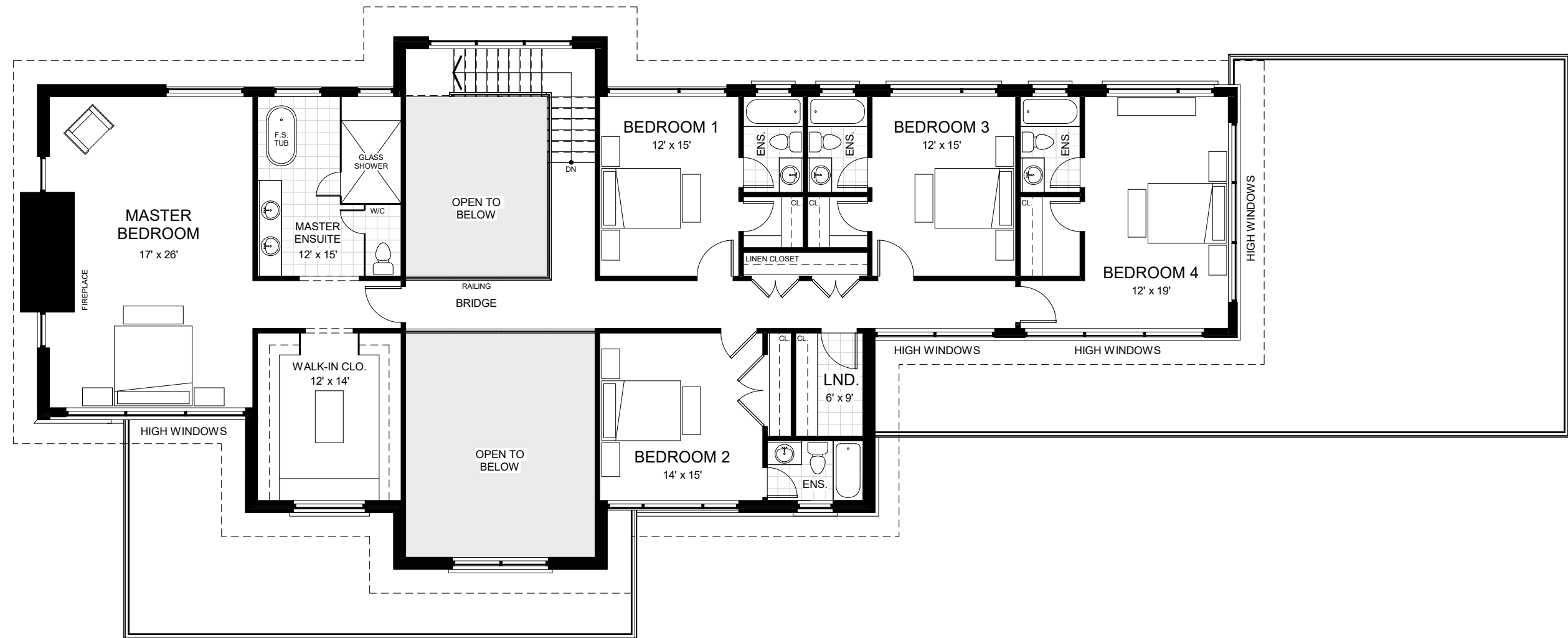


# GROUND FLOOR

SCALE: 1" = 10'

FLOOR AREA: 2740 sq. ft.  
TOTAL GFA: 5425 sq. ft.

PLANS PREPARED BY: **BARRY GOLDMAN ARCHITECT**



## SECOND FLOOR

SCALE: 1" = 10'

FLOOR AREA: 2685 sq. ft.  
TOTAL GFA: 5425 sq. ft.

PLANS PREPARED BY: **BARRY GOLDMAN ARCHITECT**